

## WORKSHOP 1A: Mapping Pastoral Care

---

### 1. 'Pastoral Care' in the Bible

#### a) Pastoring = Shepherding

##### **pastor (n.)**

late 14c. (mid-13c. as a surname), "shepherd, one who has care of a flock or herd" (a sense now obsolete), also figurative, "spiritual guide, shepherd of souls, a Christian minister or clergyman," from Old French *pastor, pastur* "herdsman, shepherd" (12c.) and directly from Latin *pastor* "shepherd," from *pastus*, past participle of *pascere* "to lead to pasture, set to grazing, cause to eat," from PIE root **\*pa-** "to feed; tend, guard, protect." Compare **pasture**.

#### b) God as Shepherd of Israel

(Psalm 77:20 Ezekiel 34:11-16, Psalm 23:1-6)

#### c) Israel's King as Shepherd

(2Samuel 5:2)

#### d) Israel's Leaders as failed Shepherds

(Ezekiel 34:1-10, Jeremiah 23:1)

#### e) The Messiah as Shepherd

(Ezekiel 34:23-24, Jeremiah 3:15 )

#### f) Jesus as Good Shepherd

(John 10:14-16, Luke 15:3-7)

#### g) Elders as Shepherd of God's Flock

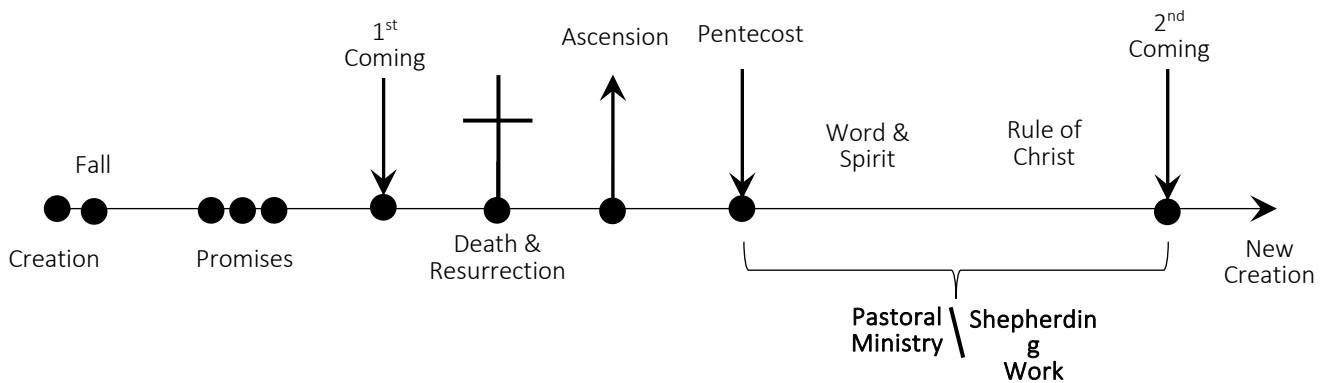
(Acts 20:28-29, 1Peter 5:1-11)

### Shepherding/Pastoring in the Bible

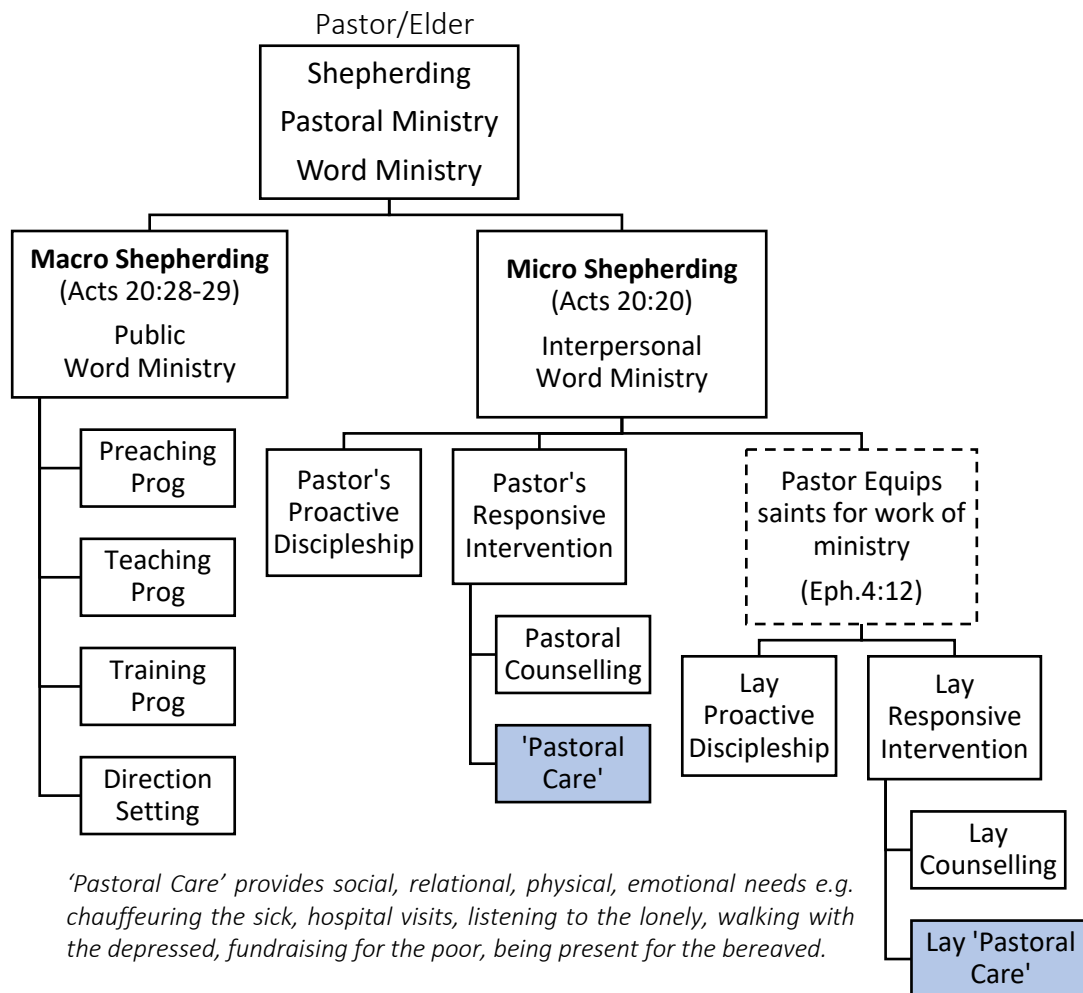
1. **God** is the ultimate Shepherd of His people who leads His people into eternity with Him.
2. **Jesus Christ** is God's chosen Chief Shepherd who laid his life as the sacrificial Lamb to rescue God's people, and through whom God now rules over and cares for His people.
3. **Elders** are God's gifted shepherds (pastors) through whom Jesus rules and cares for God's people through His Word by His Spirit.
4. **Shepherding** concerns the sacrificial, authoritative and compassionate leading of God's people under God, by His Word, into Eternity with God – which involves protecting, providing and guiding the people, point people to Jesus.

## 2. 'Pastoral Care' in Pastoral Ministry

### a) Pastoral Ministry / Shepherding Work in God's Plan & Purposes



### b) 'Pastoral Care' in Pastoral Ministry



### c) 'Pastoral Care': A Working Definition

'Pastoral Care' is part of Shepherding which is the sacrificial, authoritative and compassionate leading of God's people under God, by His Word, into Eternity with God. It involves providing social, relational, physical, emotional needs to create a context where sufferers are cared for wholistically with the goal to shepherd them into eternity.

### 3. 'Pastoral Care' Today & In Church History

#### 2023 'Pastoral Care' in Gongshang Primary School & NTU




Home | Our GSPS Experience | Character and Citizenship Education (CCE) | Programmes | [Pastoral Care](#)

## Pastoral Care

The Pastoral Care Team looks into the support of:

- Pupils who require social and emotional support
- Pupils who require counselling
- Pupils with Special Educational Needs (SEN)
- Pupils who are on the Financial Assistance Scheme

Gongshang Primary School emphasises the social and emotional well-being of all the pupils of the school. Overseeing these aspects is the Pastoral Care Team consisting of the Full-Time School Counsellor and the Allied Educators (Learning and Behavioural Support)(AED/LBS).

Home > College of Engineering > School of Mechanical and Aerospace Engineering > About Us > Pastoral Care

## About Pastoral Care

Pastoral Care (PC) is an embodiment of skills, knowledge and services which the School offers to promote as a healthy, enjoyable and fruitful campus life for students. It ensures that all MAE students have access to counselling pertaining to academic matters, financial issues, relationships problems et cetera. Where academic performance is concerned, team members in PC assist the students in identifying their areas of difficulty and developing strategies to improve their academic performance.

#### How did we get here?

- 358AD Gregory of Nazianzus: 'Physician of Souls'
  - 590AD Gregory the Great: 'Consideratio' & Spiritual Perspective
  - 1541 Martin Bucer: 'On the True Pastoral Care'
  - 1700s Revivalism
  - 1859 Darwin's *Origin of Species*
  - Late 1800s Psychology Evolution with Wundt & Freud
  - WW1&2 Wartime clergy
  - Mid 1900s Carl Rogers' Person-centred Approach
- Carl's theory involves a self-concept, which subsumes three components: self-worth, self-image and ideal self. Rogers developed an approach of client-centred therapy to help people self-actualize, or reach their full and unique potential.*
- 1930s Boisen & Clinical Pastoral Education.
  - 1980s Pastoral Care in schools concerns the promotion of health and wellbeing, resilience, academic care and social capital.
  - 1987 Total excellence in schools
  - 2023 'Pastoral Care' in schools, hospitals, churches.

#### 'Pastoral Care' Today

It is clear that 'pastoral care' today is removed from its biblical roots which involves the shepherding of God's people into eternal bliss: 'Pastoral Care and Guidance seek to help students realise their potential and work towards actualizing it...It must be noted that the term does not have any spiritual connotation... not only intellectual but social and emotional' (7<sup>th</sup> APECA, 1987).

## 4. Pastoral Care in a Local Church

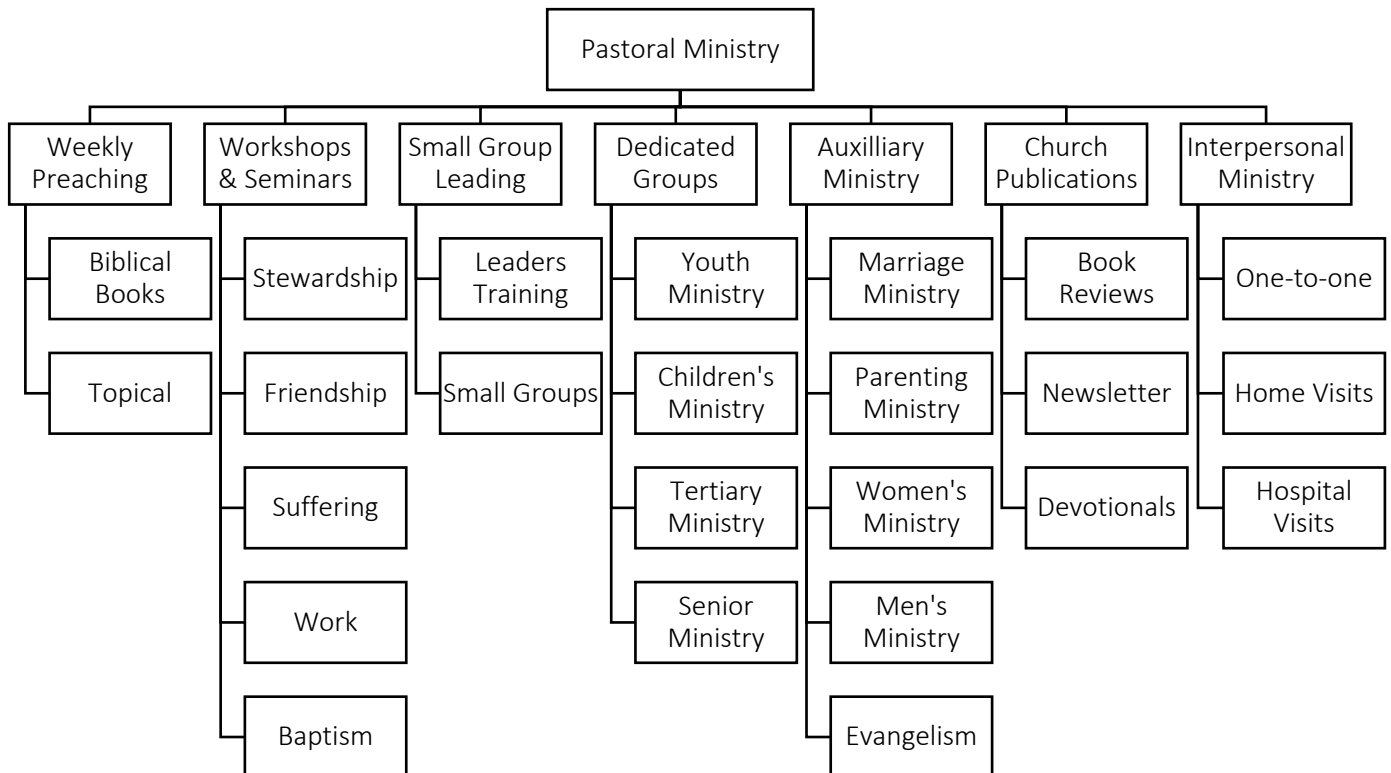
### Life Issues

Marital Abuse	Marital Conflict	Premarital Sex	Miscarriage	Infertility
Dating Unbeliever	Porn Addiction	Alcoholic	Gambling Addiction	Gaming Addiction
Same-sex Attraction	Eating Disorder	Discontentment & Jealousy	Workaholic	Anger
Adultery	Dementia	Down Syndrome	Work Stress	Suicidal Ideation
Chronic Pain	Terminal Illness	First Child	Loneliness	Caregiver Fatigue
Unemployment	Postnatal Depression	Insomnia	Conflict	Financial Stress

### Spectrum of Issues



### Typical Local Church Ministries



### Exercise

Pick a few life issues. For each: 1) Reflect on how you perceive the issue, where on the spectrum would you typically place the issue? 2) Where in the ministry of the local church has pastoral care on this issue been given, and the lay equipped to offer care?

## 5. Case Scenarios

Based on what you have learnt from the class about biblical pastoral ministry (and its subset pastoral care), what would pastoral care for this individuals involved in a given week?

### a) Grieving Grace

Grace recently lost her mom to cancer. Soon after retirement, the seemingly healthy and active Christian lady was unexpectedly diagnosed with stage four lung cancer. After few months of chemo treatment, she died last week – less than a year after diagnosis. She is survived her husband and her only child, Grace. While Grace finds comfort in mom being a believer, she is grieving by the sudden loss - she was very close to her mom.

### b) Depressed Danny

Danny relocated recently from Auckland to Singapore for work. This is the first time is away from his family and church. For 6 months, he finds it hard adjusting to the new work culture, and struggles with making new friends in a big church. His diet and sleep routine hasn't been great. He has started seeing a psychiatrist and a counsellor, was diagnosed with depression and put on anti-depressants. Though difficult, he can still function at work and move around.

### c) Hospitalised Horace

Horace's wife is pregnant and expecting to deliver any time soon. One Sunday afternoon after church, Horace ruptured his Achilles tendon in basketball game. Horace is admitted to prepare for surgery the next day. He has to stay a night for observation post-surgery and will be on crutches for at least the next 6-8 weeks.

### d) Marriage-Conflicted Maggie

Maggie shared recently that her marriage to Colin hasn't been in a good place for a while. At the beginning they still raised their resentment and issues to each other, even though there was hardly resolution. But now they have both 'given up' and not fight anymore. They busy themselves with work and hardly talk to each other, except for logistical arrangements around family affairs. There is no emotional connection, and she is considering divorce.

### e) Same-sex Attracted Stan

Stan became a Christian in secondary school through a friend who eventually brought him to church where the Lord grew Stan in conviction. He is an encouraging member of a local church where he serves regularly. As Stan got exposed to Christians' discussion LGBTQ, he slowly came to understand the homosexual feelings he experienced since young. One day, he shared with you he's gay and that he feels 'utterly, eerily, helplessly lonely and isolated'.

### f) Addicted Andy

Andy shared privately with you that he has been struggling with porn addiction since high school, when he accessed internet porn regularly. There were porn-free periods, especially after he became a Christian in university. In fact, he remained porn-free many years into his marriage. However, last year when he experienced great work pressure, felt disconnected with his wife, frustrated with parenting – he turned to porn, and it has been unabating since.